



North Devon Council: Planning Site Inspection Summary

Application Number: 77576

Site Inspection: 19th March 2025

Site/Application address:

White Cross Offshore Windfarm (Onshore Project)

Application detail:

Full planning permission for the construction and installation of onshore electrical infrastructure required to export electricity from the White Cross Offshore Wind Farm to the national distribution network; including installation of 132kV underground electricity transmission cable(s) from landfall at Saunton Sands Car park to a new substation at East Yelland. Construction of temporary facilities required during construction to include haul road, vehicular access, compounds, associated works areas and a permanent substation access road. Construction of a new substation under the Rochdale Envelope Approach with additional information regarding architectural form and silhouette, design code, scale and layout, landscaping, lighting, and appearance and materials.

The application site comprises a linear onshore cable route for the Whitecross offshore wind farm that extends over approximately 8km from the landfall at Saunton Sands Car Park and then extends initially in an easterly direction through Braunton Burrows and then south through Braunton Marsh, across the Taw Estuary and then south of the Tarka trail at Yelland to connect to a proposed new substation. The new substation will connect to the existing East Yelland substation. The substation will comprise a new building measuring approximately 71m x 24m and would be 10m in height, with a control building of 35m x 9m that would be 5m in height. The substation site will extend to 106m x 50m and will be accessed by a new road from the existing Yelland Quay private road near the Tarka trail crossing point.

Planning Officer: Andrew Sierakowski

Location Plan attached: Y

Location of meeting point identified on plan: NA

Details for location of meeting point (e.g. parking/access): Minibus to depart BEC at 9.30am. Walking boots are advised.

Itinerary for Inspection:



The Site Inspection will be by minibus only and will follow as closely as possible the cable route for the White Cross Offshore Wind Farm from its landfall at Saunton Sands to Yelland.

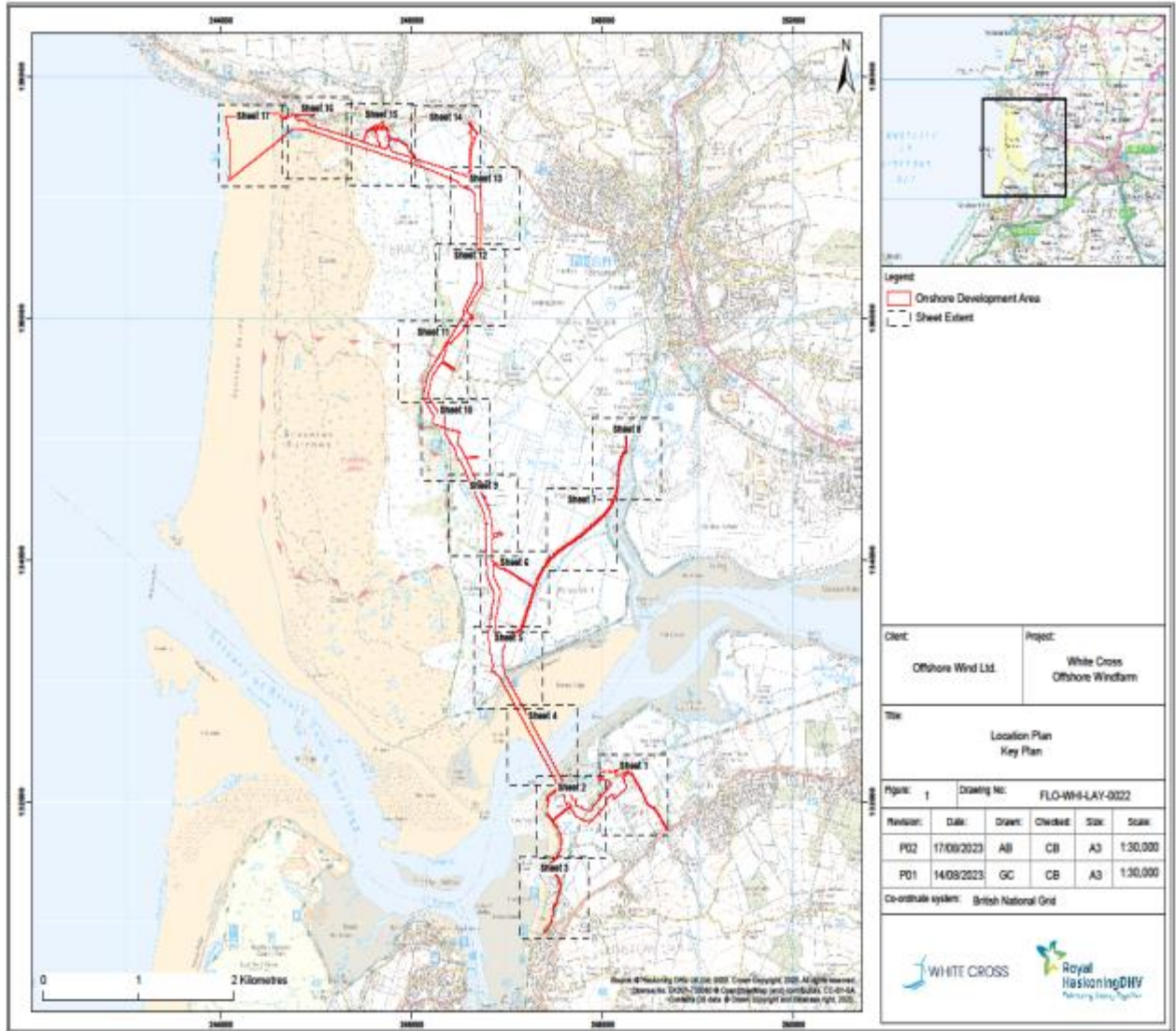
There will be four stops along the route as follows:

1. Visit to Saunton Sands to view cable landfall and Saunton Sands Car Park that will be used as construction compound. Disembark from Minibus;
2. Drive in the Minibus along the Saunton Road and then south down to Sandy Lane for a stop at the Sandy Lane Car Park to the cable route. Disembark from Minibus;
3. Drive in the Minibus via to Toll Road to Broad Sands Car Park overlooking the Taw Estuary to view the crossing point. Disembark from Minibus;
4. Drive in the Minibus via to Yelland to view Proposed Yelland Substation site. Disembark from Minibus;
5. Return to BEC.

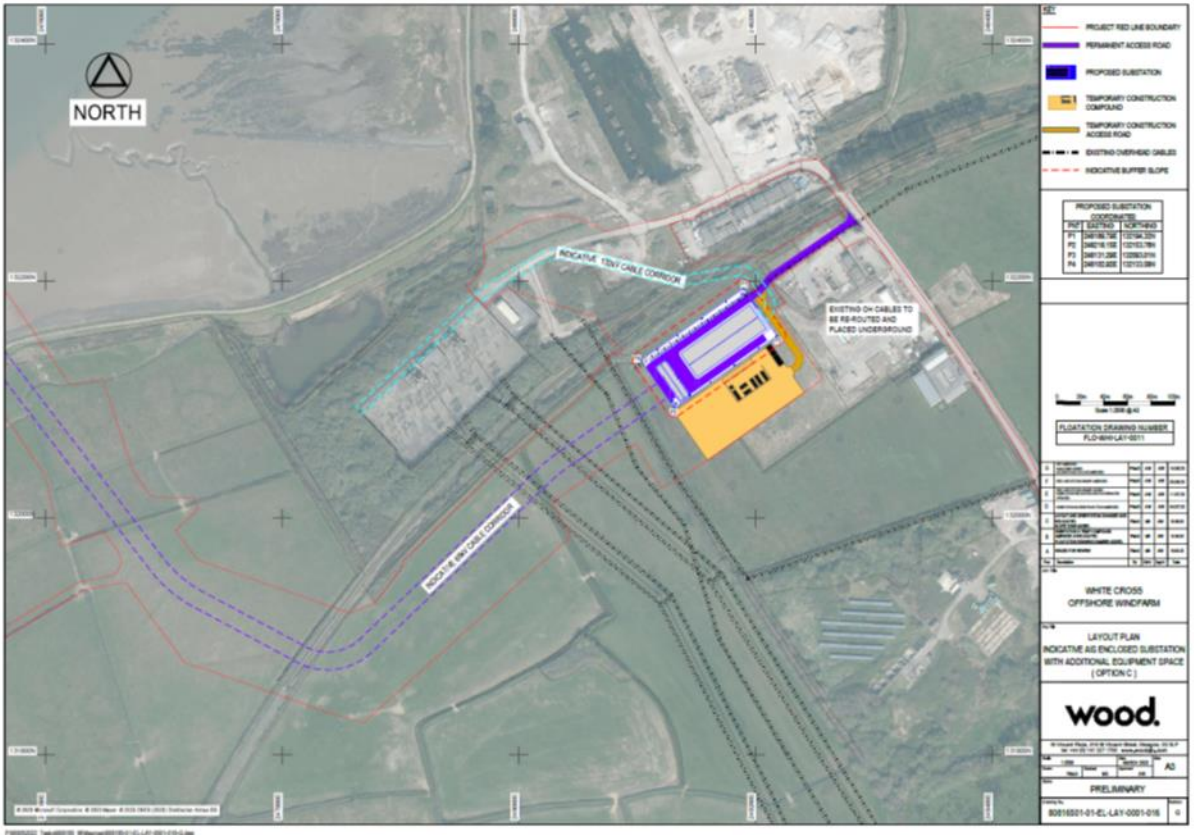
It is estimated that the entire Site Inspection will take 2.30-3.00 hours.

Plans

OS Plan:



Site Location Plan:



Layout Plan:

