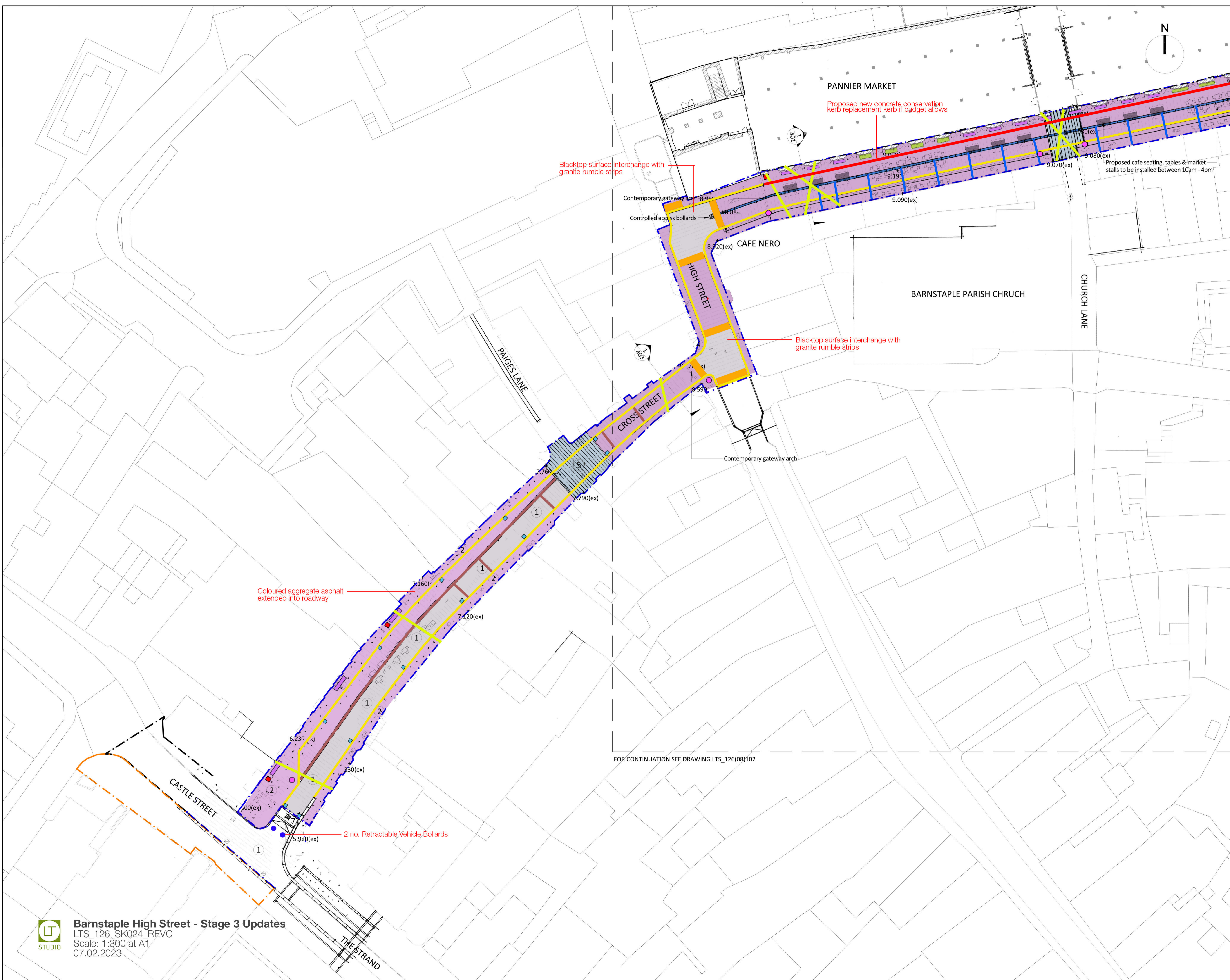


GENERAL NOTES:

1. ALL DIMENSIONS AND LEVELS SHALL BE CHECKED ON SITE PRIOR TO CONSTRUCTION WORKS COMMENCING.
2. ALL LANDSCAPE DRAWINGS TO BE READ IN CONJUNCTION WITH ALL RELEVANT ARCHITECTS & ENGINEERS DRAWINGS AND SPECIFICATIONS.
3. ANY DISCREPANCY CONCERNING THE DRAWINGS SHOULD BE REFERRED TO LANDSCAPE ARCHITECT IMMEDIATELY.
4. ALL DIMENSIONS ARE IN MILLIMETERS UNLESS NOTED OTHERWISE.
5. ALL LEVELS ARE IN METERS.
6. EXISTING SERVICE ALIGNMENTS SHALL BE CHECKED ON SITE BY THE CONTRACTOR PRIOR TO CONSTRUCTION WORK COMMENCING.

- Key**
- Site boundary
 - Proposed prohibition of vehicles 10am-4pm
 - Castle Street public space
 - Proposed planting area
 - 5 Reclaimed Granite silver grey sets to match those found on Church Lane - sets to be laid in accordance with BS 7533
 - Linear channel drain
 - +13.250(ex)
+12.900 Existing levels/ Proposed levels
 - Proposed catenary lighting string between two storey buildings - height of lighting to be above 4.5m
 - Linear timber & black powder coated steel benches
 - Black powder coated steel bio-retention planters with SuDS function from existing rainwater pipes
 - 'Bell' Bollards to protect the landscape elements from vehicle collisions
 - Down pipe drainage discharge channels
 - Existing granite kerbs retained in situ (125mm wide)
 - 1 Black top surface finish
 - 2 Red/Pink aggregate asphalt wearing course to pedestrian footpath to match the footpath material on The Strand
 - Proposed silver grey granite kerbs (125mm wide) to match 'The Strand' and to represent Burgrave Plots
 - Proposed drainage gullies
 - Proposed litter bins
 - Proposed granite rumble strips
 - Proposed new concrete conservation kerb replacement kerb if budget allows



FOR CONTINUATION SEE DRAWING LTS_126(08)102

